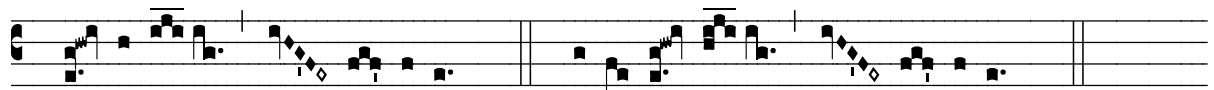


Missa I - Lux et origo



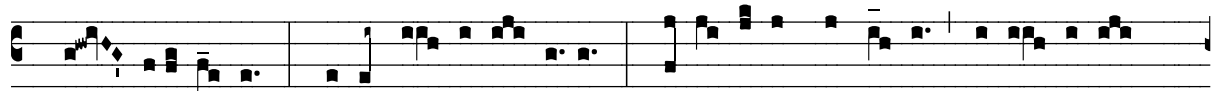
Ky- ri e *e- lé i son. *ij.* Chri- ste e- lé i son.



ij. Ký- ri e e- lé- i son. *ij.* Ký ri- e *e- lé- i son.



Sanc-tus, * Sanc-tus, Sanctus Dómi-nus Deus Sá-ba- oth. Ple- ni sunt cæ- li et terra



gló- ri a tu- a. Hosán-na in ex- celsis. Be-ne- díc-tus qui ve- nit in nó- mi ne



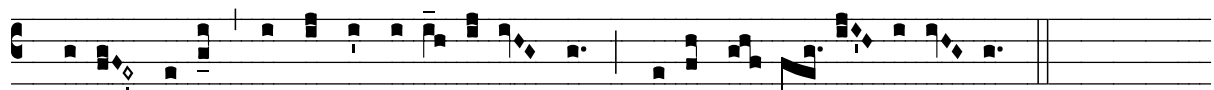
Dó- mi- ni. Ho- sán-na in ex- cël- sis.



A gnus De i, * qui tol- lis peccá- ta mun- di: mi se ré- re no- bis.



A gnus De i, * qui tol- lis peccá- ta mun- di: mi se ré- re no- bis.



A gnus De i, * qui tol- lis peccá- ta mun- di: do na no- bis pa- cem.